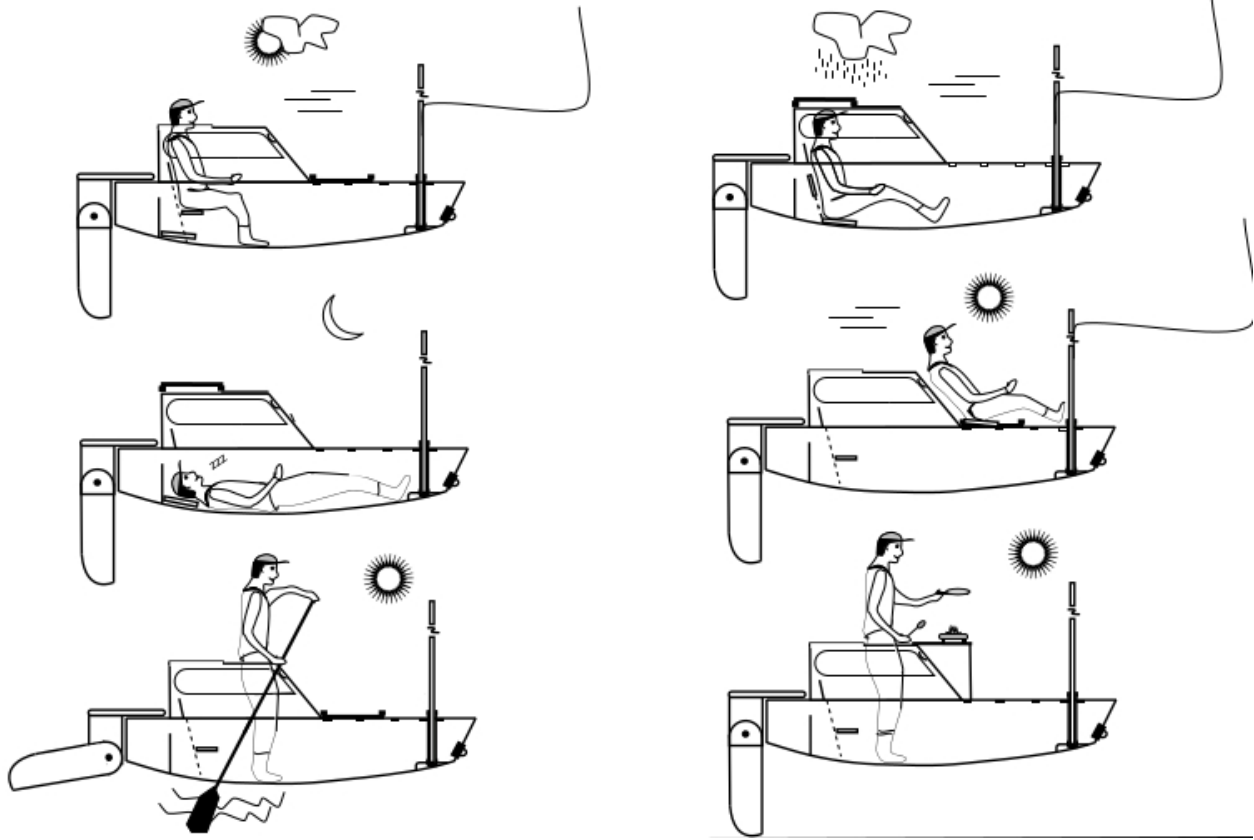
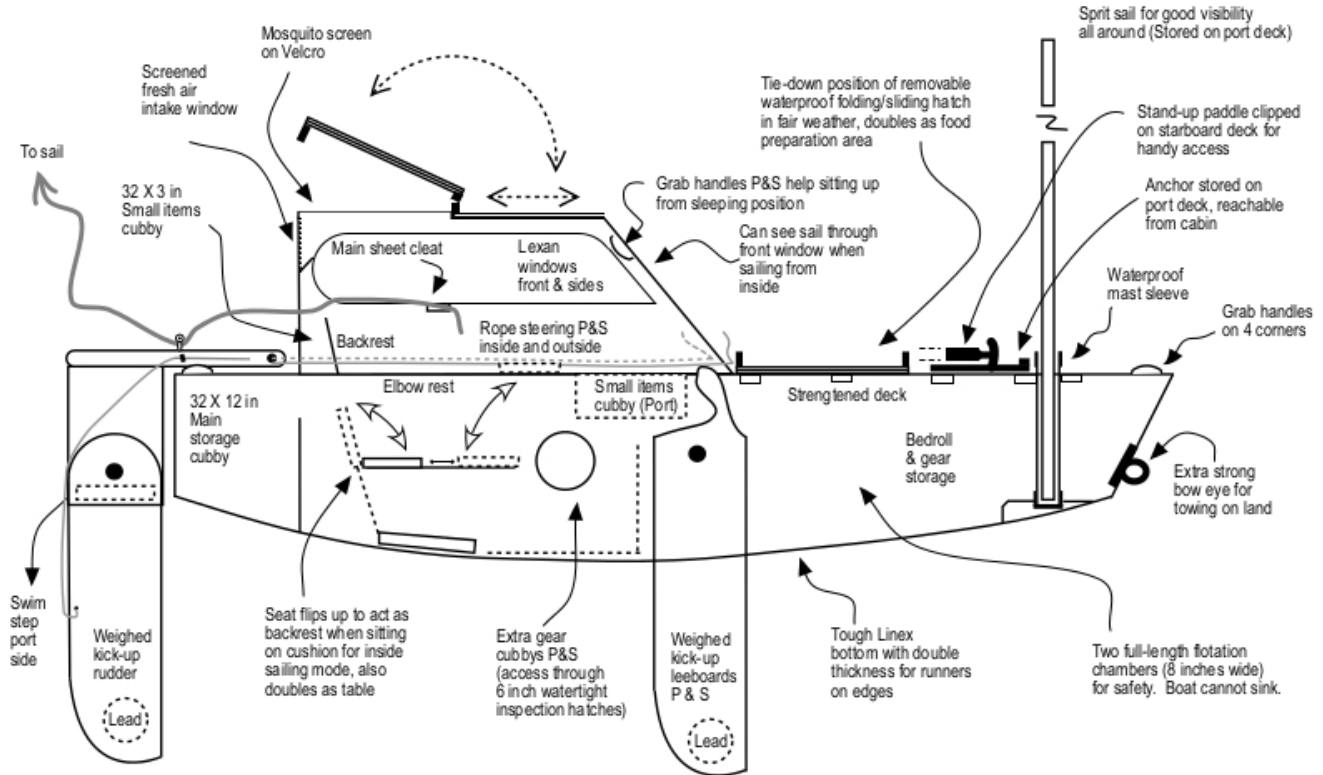
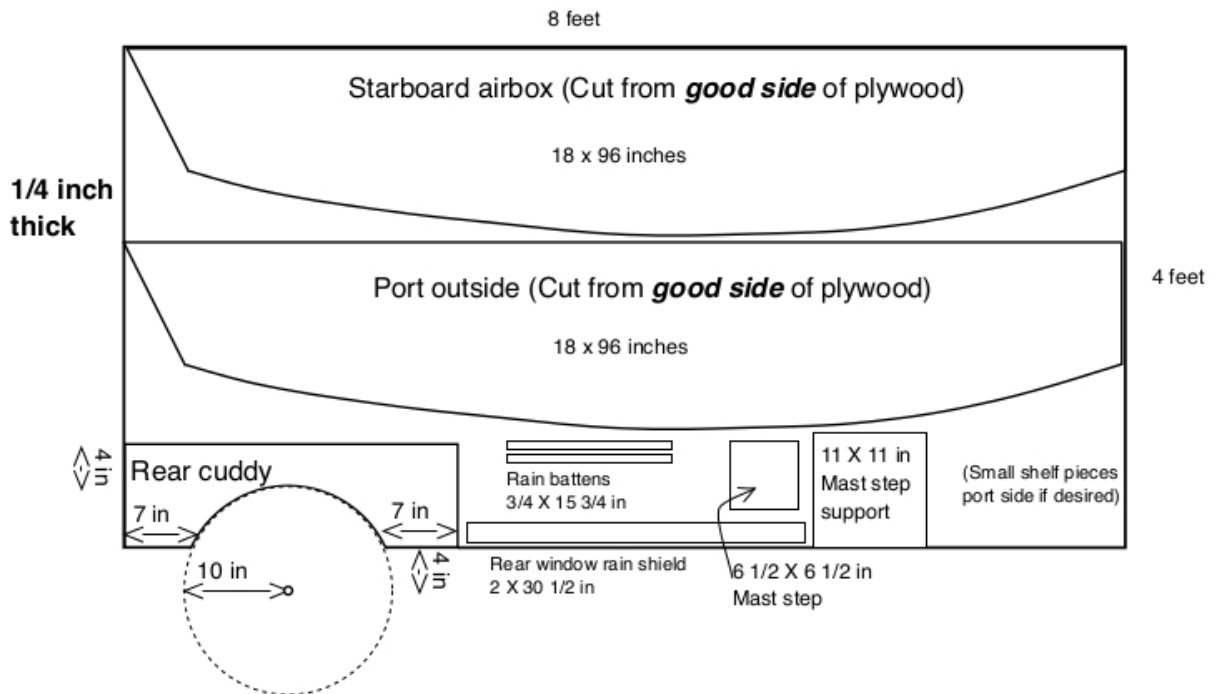
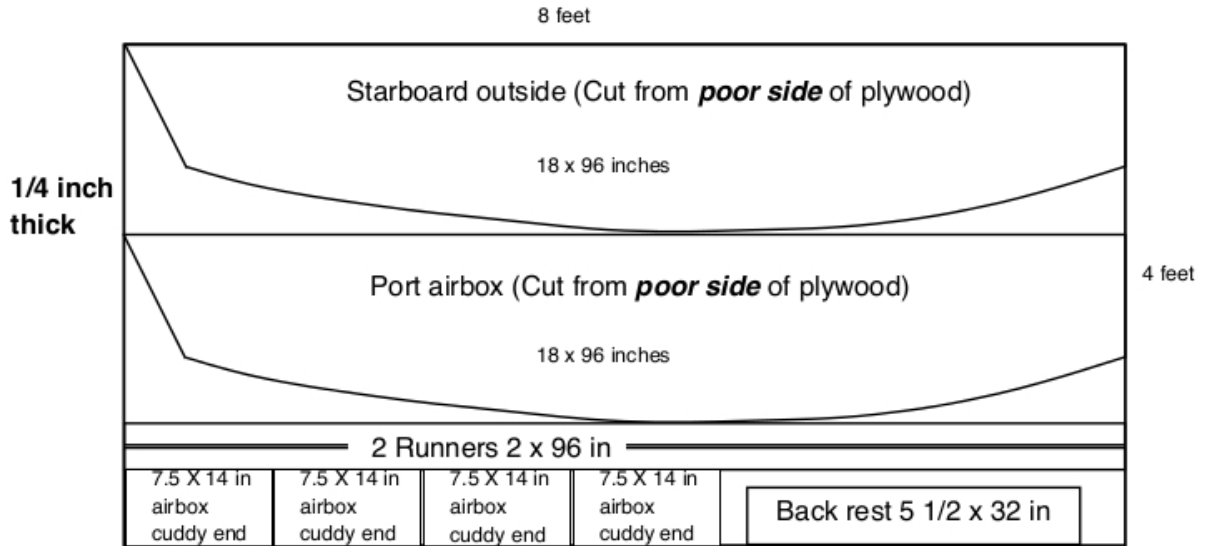


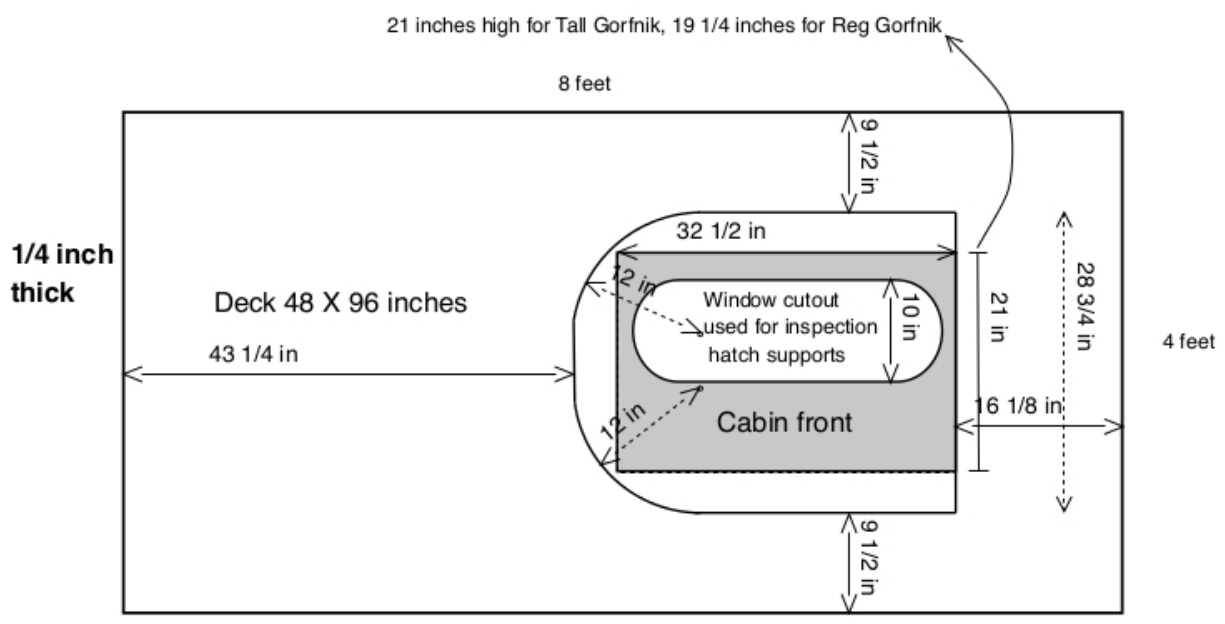
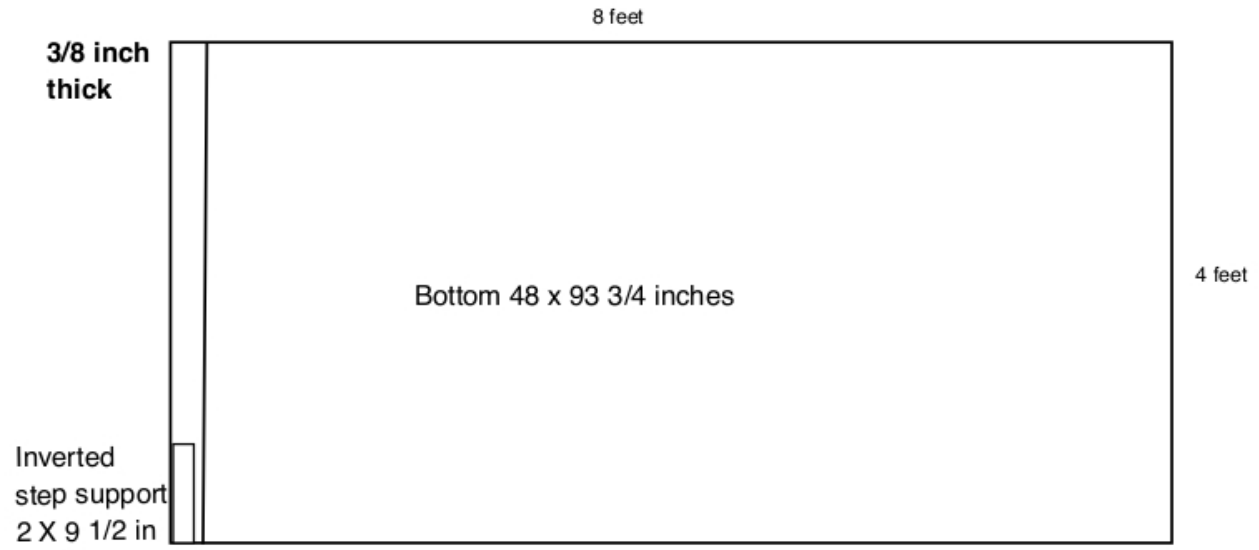
Gornik 8 ft micro cruiser overview (AF Bourbeau 2016)



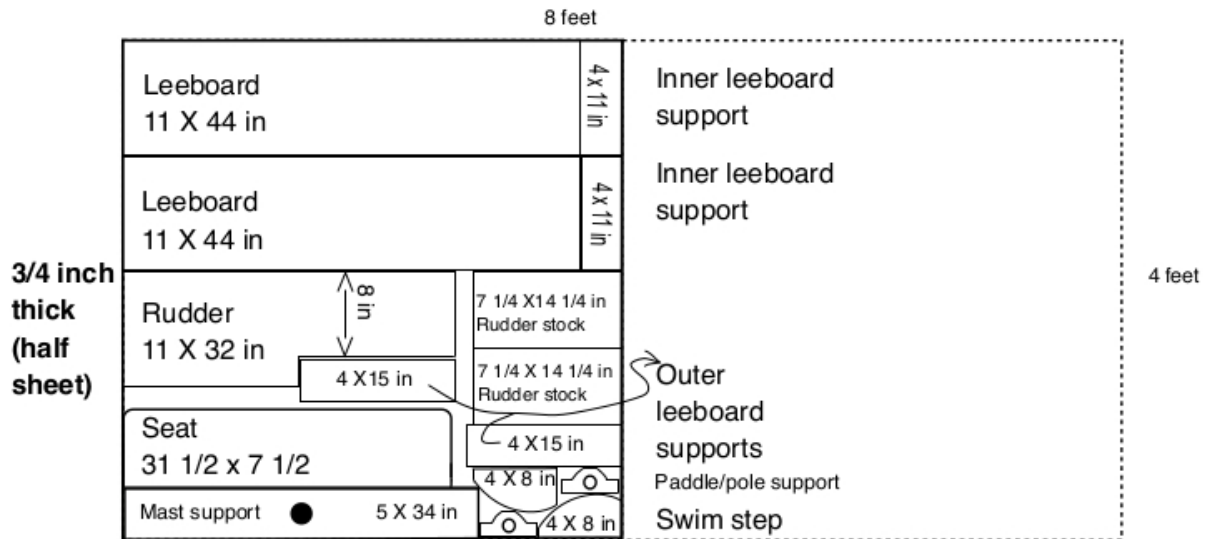
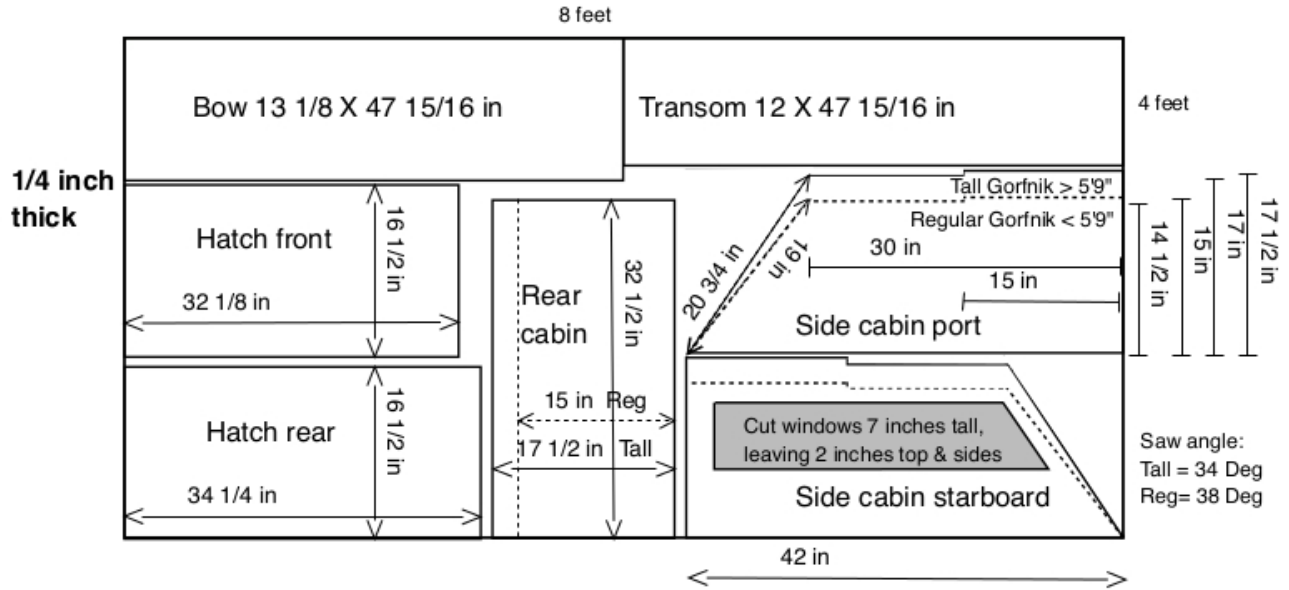
Gorfnik plywood layout 1 & 2 (AF Bourbeau 2016)



Gorfnik plywood layout 3 & 4 (AF Bourbeau 2016)

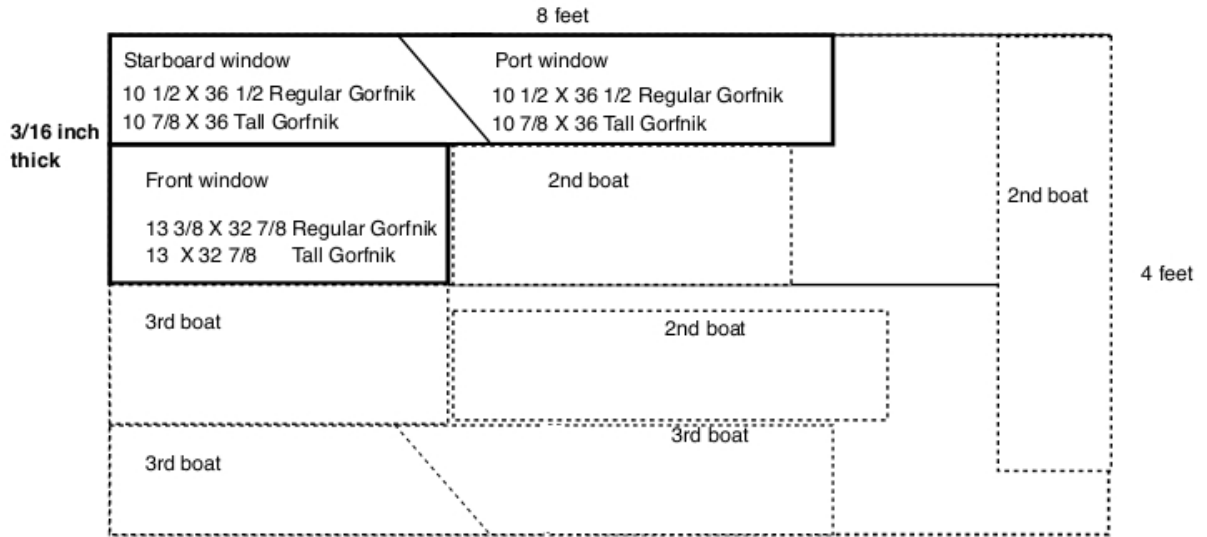


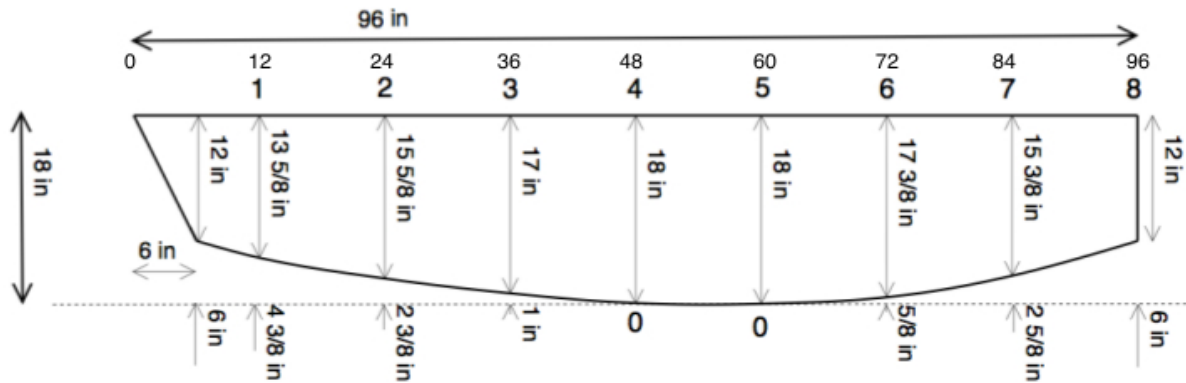
Gorfnik plywood layout 5 & 6 (AF Bourbeau 2016)



Note: Rudder stock, swim step and paddle support all doubled to 1 1/2 inch thick

Gorfnik Lexan/Plexiglass layout (AF Bourbeau 2016)

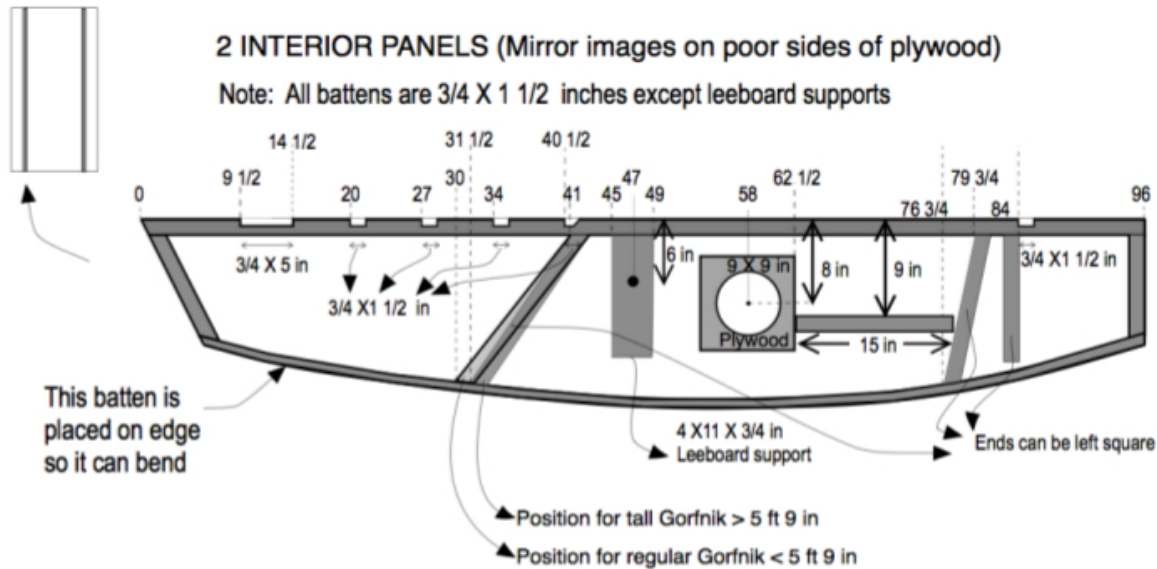




Source: David "Shorty" Routh, PDRacer.com

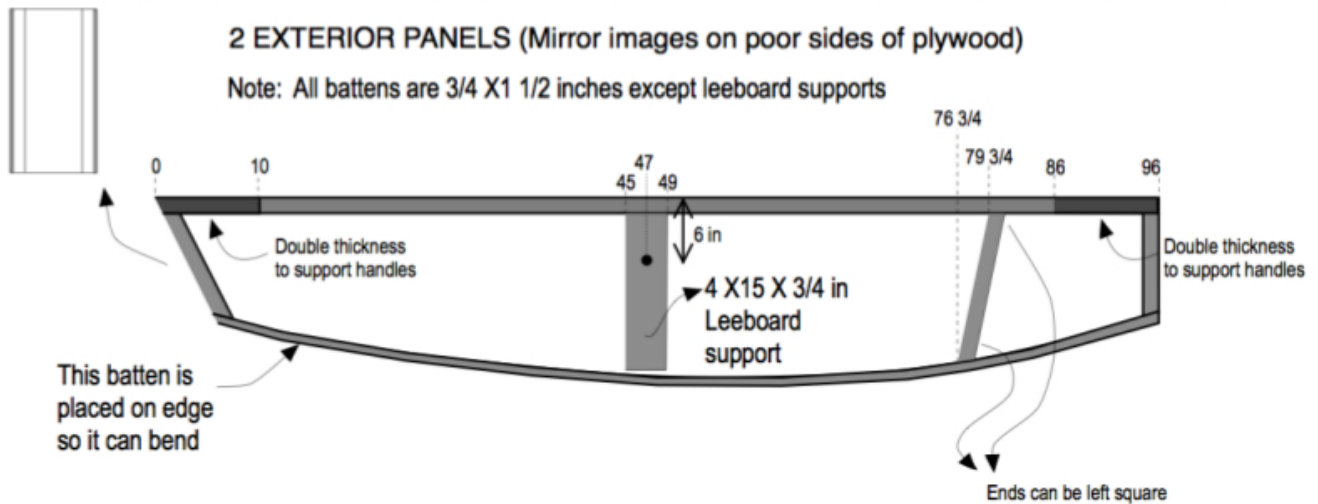
2 INTERIOR PANELS (Mirror images on poor sides of plywood)

Note: All battens are 3/4 X 1 1/2 inches except leeboard supports



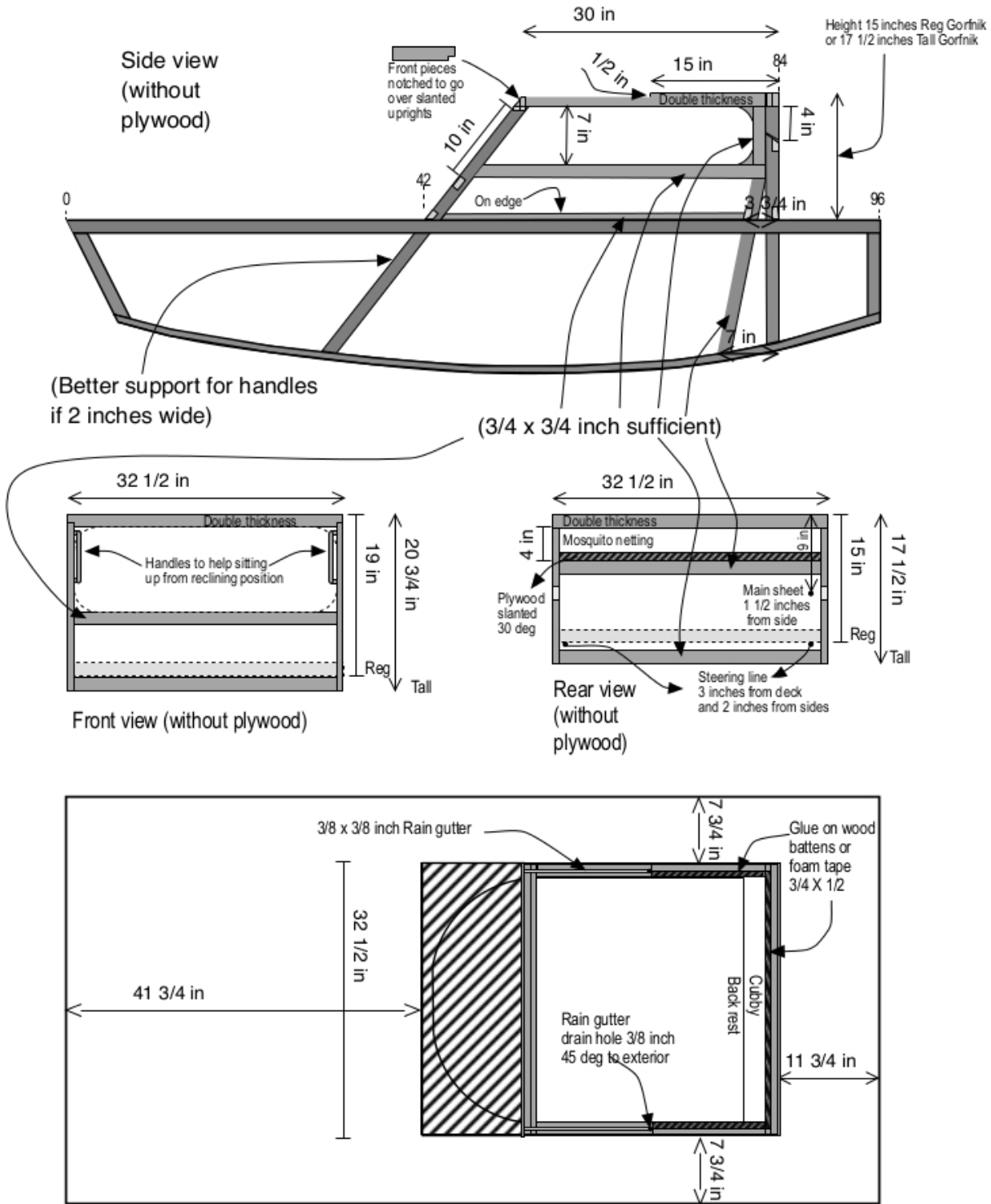
2 EXTERIOR PANELS (Mirror images on poor sides of plywood)

Note: All battens are 3/4 X 1 1/2 inches except leeboard supports

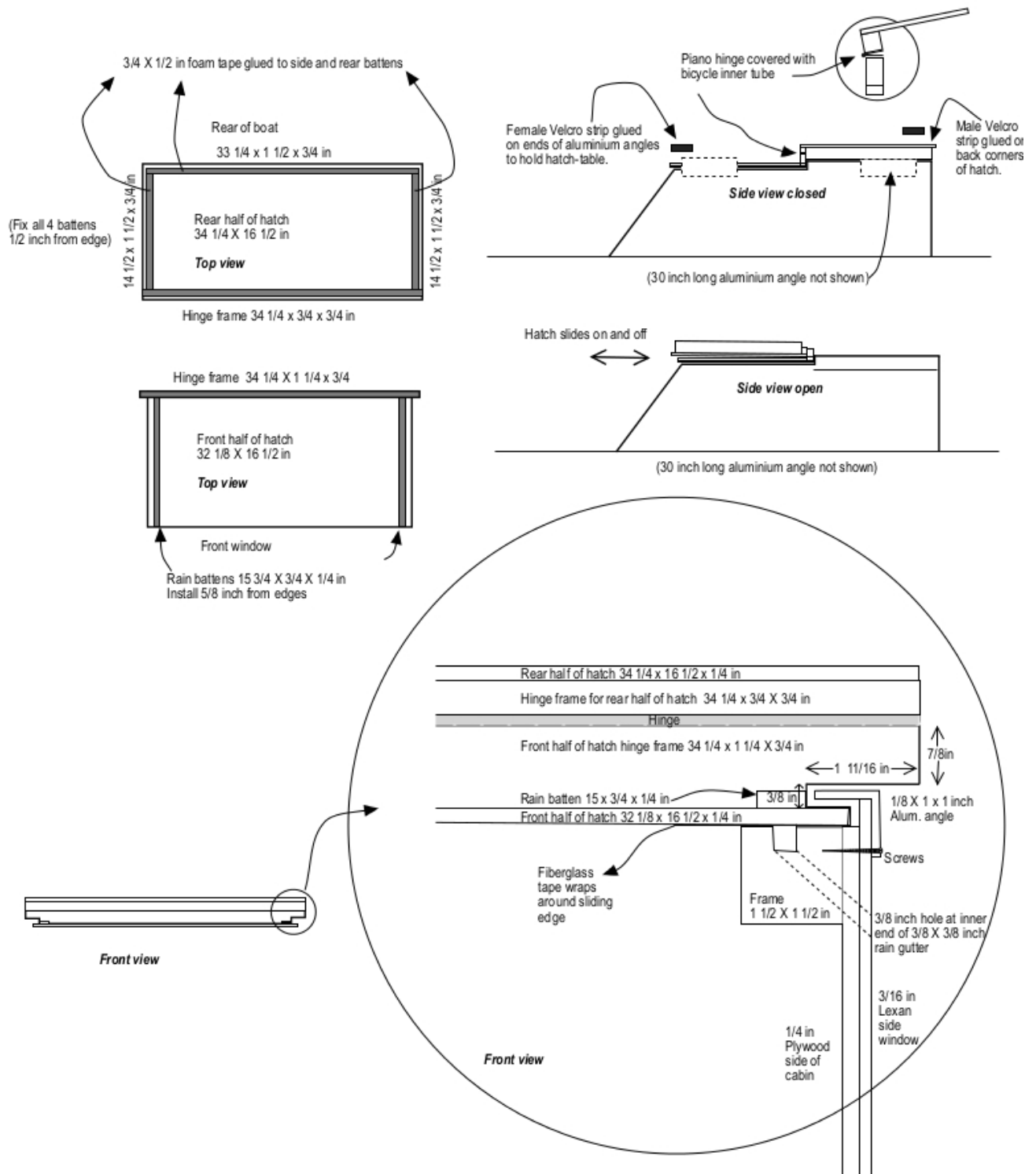


Gornik cabin details (AF Bourbeau 2016)

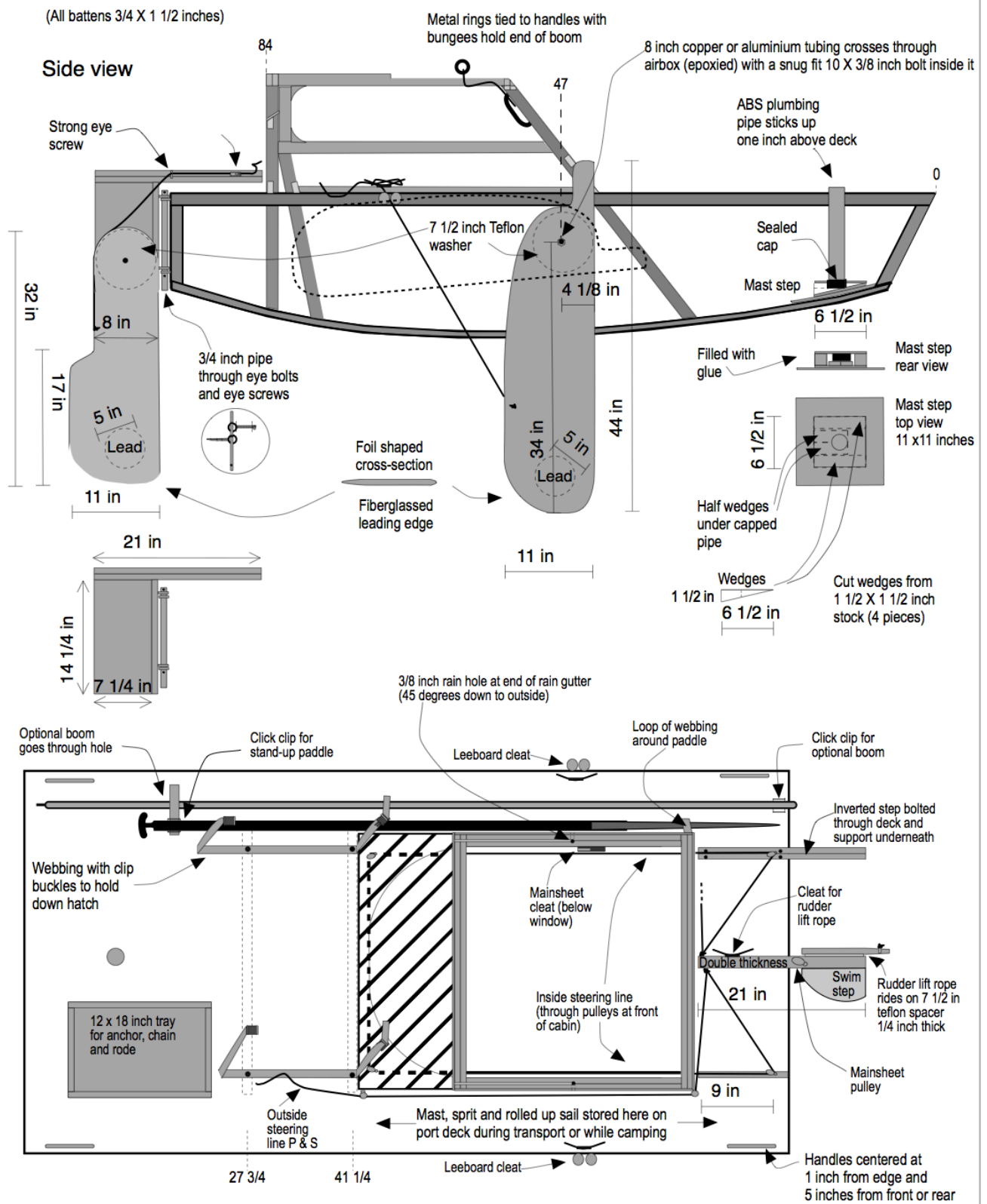
Note: All frames are 1 1/2 X 3/4 inches for simplicity (optional improvements noted)

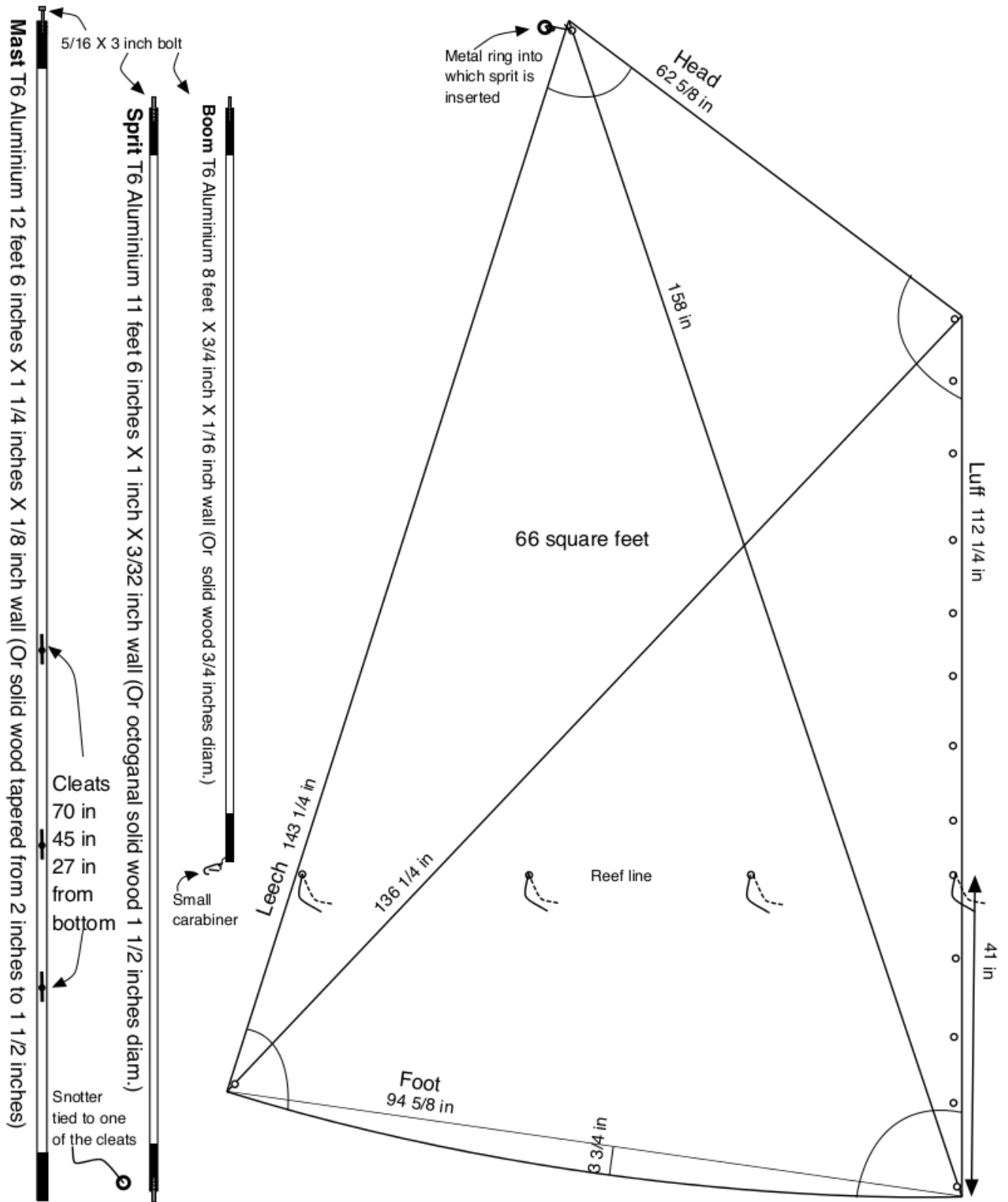


Top view of frames including plywood (Aluminium angles and Lexan windows not shown)



Gorfnik leeboards, rudder and other details (AF Bourbeau 2016)

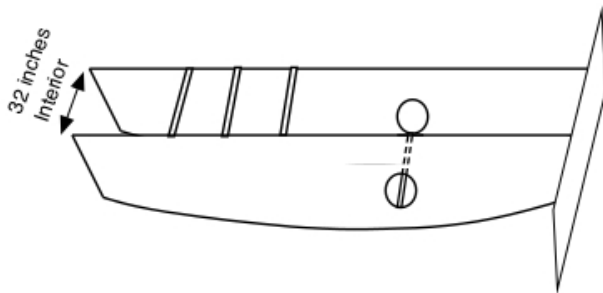




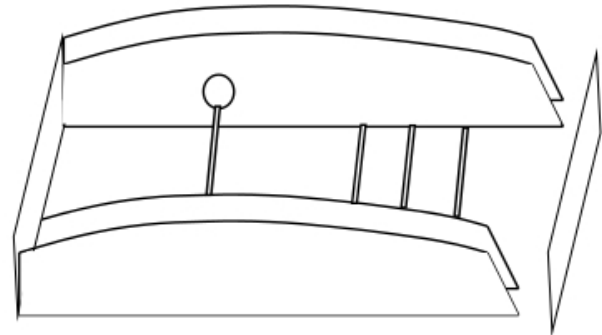
Ends sealed with 6 inch wood plugs (epoxied)

Source: Todd E. Bradshaw, Canoe Rig, 2000

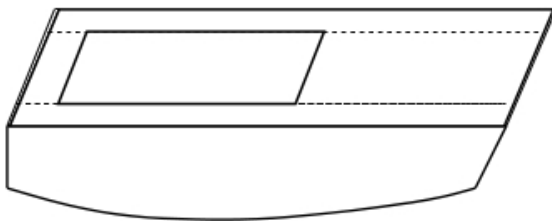
1) Screw temporary cross pieces and fix transom to inner sides



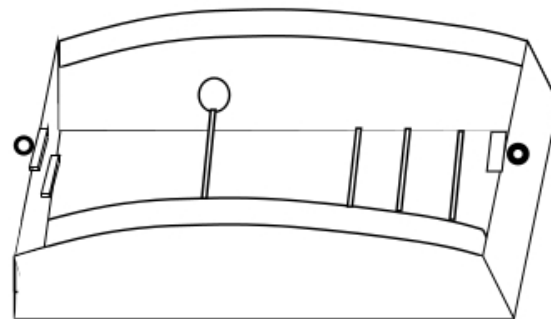
2) Flip and fix transom to outer sides, then add bow piece



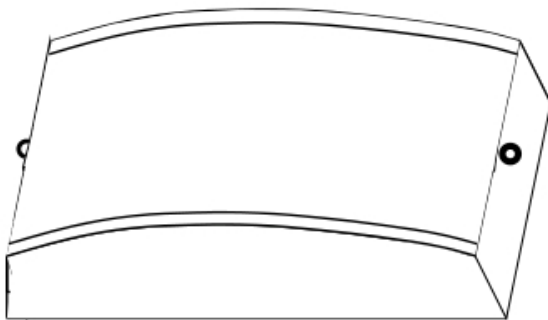
3) Flip again and temporarily screw deck on to align everything. The boat is 8 feet 1/2 inches long, there will be 1/4 inch missing at each end, which will later be filled with glue.



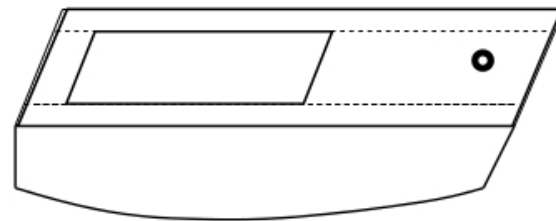
4) Flip once more and add bow ring and rudder mounts



5) Glue and screw on bottom. Add runners. Paint...



6) Flip again, remove top. Permanently glue and screw deck support pieces plus mast step and support pieces. Paint inside. Put top back on and glue and screw permanently.



7) For the cabin, cut the plywood and fit the uprights to the plywood, not the other way around. Do NOT glue and screw the uprights first. Start with the two cabin sides, then the back and finally the front.

Check out prior build photos for more details.

I believe this to be a fine minimalist micro-cruiser for protected waters, but I am not responsible for any use you make of this vessel. Play safe. Have fun!

